

AdvanTEC TALK

The Metro Purple Line Subway Project

By Delfino Esquer and Mario Gillespie



ADVANTEC Has Provided Engineering Services on the Metro Purple Line Subway Extension Since 2008

~One of the biggest public works project on the West Coast, at a budget of \$9.3 billion, the Metro Purple Line (D Line) Extension Transit Project is a critical link in the Los Angeles County (LA) transit network serving the westside cities with seven new stations and over 9 miles of tunnels.

~This will provide a safe, reliable, and affordable high-speed connection between downtown Los Angeles and one of LA's busiest areas, the Westside, which are the two largest job centers in Los Angeles.

~This is also one of the "28 for 28" high-profile projects funded by METRO and the Federal government for the 2028 Los Angeles Olympics.

For Section 1, ADVANTEC has a full-time staff member on the construction site who performs the following tasks:

- Provides overall utility related technical support including assisting Metro in reviewing the contractor's utility identification to be impacted by the project and relocations, protections in place and changes in materials
- Assists Metro in review of any utility conflicts matrix and updating and maintaining the utility information
- Assists Metro in disputes regarding both the dry and the wet utility systems
- Reports on Independent Construction Monitoring activities

For Section 2, ADVANTEC staff are performing project studies and are supporting the engineering services during construction including reviewing design submittals and requests for information in conjunction with Metro. Recent project studies include two third-party issues including pavement restoration design and bus stop location coordination between several local agencies. ADVANTEC also provides clash detection review on all major interdisciplinary design submittals to ensure the Contractor's design is clash free and well-coordinated. Additionally, ADVANTEC has worked closely with the adjacent developers along the project's alignment to check that their projects are coordinated with the Section 2 project and meet Metro's adjacent development guidelines.

According to ADVANTEC CEO, Leo Lee, *"The ADVANTEC team has worked hard to keep the project on schedule while verifying the contractor meets the contract requirements."*

For Section 3. ADVANTEC helped to develop the preliminary engineering design documents in addition to studies for construction sequencing, excavation support, geologic profile creation, utility research, utility relocation design, interdisciplinary clash detection, and detention basin design.



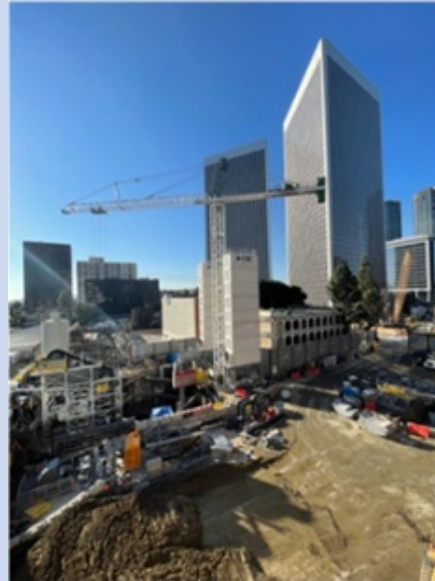
Since 2008, ADVANTEC has been one of the civil engineering team members on the WSP Team who spearheaded the design of the subway. Under the direction of Ashok Kothari, WSP has built subways in Atlanta, San Francisco, and London and is bringing their success to Los Angeles. ADVANTEC has participated with the Advanced Preliminary Engineering for this project, leading to 3 separate Design-Build contracts for the final design and construction. Initially, ADVANTEC was responsible for responding to traffic comments and issues for the Final EIR, construction haul route analysis from each of the 7 subway stations, reviewing traffic control plans, resolving utility “clash” detection using REVIT CAD, developing vehicle/tunnel design envelopes, and providing construction engineering oversight. ADVANTEC supported WSP in establishing and maintaining liaison with METRO, Caltrans District 7, the City of Los Angeles DOT, BSS, BSL and BOE and the City of Beverly Hills. Construction began on the Purple Line in 2014 and it is being built in three sections across the approximately nine-mile route: 1) Wilshire/La Brea Station, Wilshire/Fairfax Station and Wilshire/La Cienega Station through LA and Beverly Hills, scheduled to open in 2024; 2) Wilshire/Rodeo Station and Century City Constellation Station, scheduled to open in 2025; and 3) Westwood/UCLA Station and Westwood/VA Hospital Station, scheduled to open in 2027.

At this time, ADVANTEC is providing engineering support with full-time Engineers working in the construction Site Office and also providing design liaison in the Design Office. We have participated in regular coordination meetings with local agencies and in construction update meetings between the Design-Build Team and LA Metro. Wilshire/Rodeo Station is in the business triangle of the City of Beverly Hills. The station will provide connections to local bus routes, bicycle hubs, and pedestrian destinations of interest. This station will also provide access to the golden triangle, luxury hotels, Rodeo Drive, 2Rodeo, office buildings, and local neighborhoods.

Century City Constellation Station is in Century City and will provide access to the Century City Westfield Mall, office space, local bus routes and commuter bus routes. This station has two adjacent developments, one nearing completion and the other starting construction next year. Close coordination with the adjacent developers has been necessary to create a harmonious street scape that is welcoming to the public.



2021-02-16-WR5-WS2-WR52050-LG-continued excavation...
continued excavation station box west of entrance.
02/16/2021



ADVANTEC wants to thank WSP and METRO in helping small businesses like ours to gain valuable experience in a major subway project like the Purple Line. METRO has established a 23.41% SBE and DBE participation goal early on, and WSP has exceeded that goal consistently!

ADVANTEC Welcomes our New Director of Transportation, Chris Buscarino, PE and Director of Construction Management, Charles Tsang, PE, TE



ADVANTEC is pleased to welcome Chris Buscarino, PE, to join our team as our Director of Transportation Engineering.

Bringing Chris on board illustrates our commitment to the growing Transportation and Municipal Engineering practice. Chris brings over 32 years design and management experience in transportation and multi-disciplinary infrastructure for agencies and clients. His expertise is in roadway and highway design, civil on transit design for Design Build projects, coordinating with agencies such as OCTA, Caltrans, LA Metro, Metro Gold Line Authority, and multiple cities, in solving complex roadway and highway issues, managing multiple design teams (including subconsultants) to deliver projects for public agencies and clients.

Chris has managed and helped deliver numerous projects valued over \$4.0 Billion in capital expenditure over his 32-year career. He has served as the project or civil design manager for several transportation contracts for agencies such as OCTA, LA Metro, Port of Long Beach, and so on. Chris recently served as the Civil Design Manager for the Sunline-Los Angeles Metro Gold Line Phase 2B LRT Design Build Project running through the cities of Glendale, San Dimas, La Verne and Pomona overseeing a civil team of over 30 engineers in the design of 21 grade crossings, MSE and CIP retaining walls, sound walls, 8-TPSS sites, maintenance and emergency access road through Caltrans SR-210 right-of-way, trackside civil, emergency access and stairs, two parking lot and four stations' sites and Metrolink Maintenance-of-Way site.

Please join us in welcoming Chris to ADVANTEC!

ADVANTEC
Consulting Engineers
www.advantec-usa.com

1200 Roosevelt, Irvine, CA 92620
(949) 851-4999
chris@advantec-usa.com

Offices in Irvine, Diamond Bar, Los Angeles, Palm Desert, and San Diego



ADVANTEC is pleased to welcome Charles C. Tsang, PE, TE to join our team as our new Director of Construction Management Services.

As Advantec approaches its 25th year of service to the engineering communities, our Mission remains: to innovate multimodal solutions for safe, efficient and sustainable transportation infrastructures, and we are expanding our service now to include Construction Management to serve our communities in a more comprehensive manner.

Charles brought with him over 32 years of multifaceted experience covering traffic, transportation, civil/roadway/highway, freight and passenger rail transit engineering disciplines, with the last 14 years focusing in construction management of heavy civil construction projects. Charles has overseen all phases of Public Works projects from project initiation and development, consultant selection and procurement, through conceptual engineering, project funding, preliminary and final design, value engineering, bidding, construction implementation to final project delivery and closeout. He managed traffic and transportation projects at more than 350 locations throughout Southern California for government agencies at Federal, State, local and crossmunicipal levels. Throughout the years, Charles has built strong relationship with his clients include Los Angeles County Metropolitan Transportation Authority, Orange County Transportation Authority, California Department of Transportation, Counties of Los Angeles, Orange, San Bernardino, Ventura, San Diego as well as Union Pacific Railroad Company.

Prior to joining Advantec, Charles was the Project Manager in-charge of the delivery of the Route 60 on/off ramp improvements at Lemon Avenue and the award-winning Nogales Street (LA Sub-division) grade separation Project.

Please join us in welcoming Charles to ADVANTEC!

ADVANTEC
Consulting Engineers
www.advantec-usa.com

2700 Copley Drive, Suite 300, Diamond Bar, CA 91765
(926) 675-3569
ctsang@advantec-usa.com

Offices in Irvine, Diamond Bar, Los Angeles, Palm Desert, and San Diego

ADVANTEC is Also Pleased to Announce the Addition of Five New Talented Team Members to the Company!

Armando Solis, PE, Senior Project Manager
Lynda Smith-Kelly, Proposal Manager
Brandon Chin, Assistant Engineer
Alan Vu, Assistant Engineer
Charles Rooney, Assistant Engineer

ADVANTEC Recognizes 11 Employees as a Part of our New Employee and Project Recognition Program

By Leo Lee, PE, CEO and Carlos Ortiz, PE, PTOE, COO



ADVANTEC recently launched a new staff recognition program and is pleased to congratulate our 11 award winners! Thank you for your extra efforts Bryan, John, Maddie, Jonathan, Ryan, Marcel, Vivian, Ana, Jackie, Mario and Delfino!

The Individual Award Criteria Includes (Each winner must excel in one of the categories below:

1. Perform duties above and beyond their level of responsibility
2. Exceptional productivity and high quality work
3. Goal achievement towards tasks budget and schedule
4. Client compliments
5. Taking initiative to help others and promote teamwork

The Project of the Quarter Award Criteria Includes:

Must address one or more of Items 2, 3, 4 and 5 above as well as:

6. Creates a significantly improved quality of life for the community in which it is being implemented. Watch for our first Project of the Quarter in our next newsletter!

CEO BLOG: ADVANTEC is Meeting the Needs of our Growing Team with Some Exciting New Programs

By Leo Lee, PE, CEO



Our last issue discussed our hybrid work environment and since that time, ADVANTEC has been hard at work to make more positive changes in the way we do things to meet the needs of our growing team, and to foster our core values, "because we care".

Employee and Project Recognition Awards

At the end of 2021, we announced a new Employee and Project Recognition program to be fully implemented by March of 2022. This program has been designed to recognize outstanding employees and projects. Our employees who go above and beyond to serve clients and perform work at the

highest levels of excellence are eligible for the award. We have initiated this program as a way of highlighting those amazing employees who exhibit our core values every day and bring our clients top level service, quality and teamwork. Project goal achievement for on-time, on-budget projects, client compliments, initiative and teamwork as well as high productivity and quality are all considered in this program. For the Project Recognition Awards, we are focusing on similar factors and projects that create significantly improved quality of life for the community in which it is being implemented.

ADVANTEC University Education and Training Program

Another important program that we are in the process of implementing is our ADVANTEC University Education and Training Program. Although we have always kept education and training of our employees as a top priority to keep up with the fast-paced evolution of our industry, we are now putting forward a more comprehensive approach to education and training at ADVANTEC. Beginning with the first few days and weeks of employment and extending all the way to leadership and executive development programs, our team will have the opportunity to enrich their careers with more education and training through this emerging ADVANTEC University Program.

ADVANTEC is continually looking for ways to make our company and the working experience of our team members better. We believe that as the benefits to our team increase, the benefits to our clients will also increase with continually higher quality, more effective and efficient project teams and individuals who care about our clients, their projects and the citizens who benefit from the work we all do.



ADVANTEC Celebrates 24 Years of Serving Public Agencies in Transportation!

On Friday, March 11th the ADVANTEC Team from offices across California gathered to celebrate our 24th anniversary. It was a special event where we welcomed our new team members and heard ideas from the entire staff. Many thanks go to our team and our clients for contributing to our 24 years of success!

WE'RE HIRING

ADVANTEC Consulting Engineers

COME JOIN OUR TEAM

OPEN POSITIONS

- Senior ITS Engineer/Project Manager
- ITS Project Engineer/System Engineer
- Public Works/Highway Project Manager
- Engineer Graduates
- Engineering Interns Part Time

<http://www.advantec-usa.com/careers/>
Competitive compensation package
email your resume to: hr@advantec-usa.com

ADVANTEC is looking for talent like yours!

ADVANTEC Consulting Engineers is a rapidly growing professional engineering firm specializing in advanced multi-modal transportation technology in planning, design, and operations. We provide our clients a variety of professional services, including, Highway Engineering, Public Works, Intelligent Transportation Systems (ITS), Traffic Engineering, and Transportation Planning. ADVANTEC's multi-disciplined team of talented and innovative professionals includes civil, electrical, and traffic engineers and planners. If you are interested in a new chapter in your career with our growing firm, please apply!

Visit ADVANTEC Careers

Calendar of Transportation Events

Watch for ADVANTEC and our Clients at the Following Transportation Events and Conferences:

***April 3-5, 2022, BiZ Conference**, Las Vegas, NV. Leo Lee, P.E., CEO and Carlos Ortiz, P.E., PTOE, COO representing ADVANTEC

***April 7, 2022, APWA Coachella Valley Expo**, ADVANTEC will exhibit and sponsor

***April 12, 2022, WTS Pacific Region Welcome Reception for Darren Kettle**, Metrolink's Newest CEO, 5:00 p.m.-7:00 p.m. Doubletree Hilton Hotel, 120 South Los Angeles Street, Los Angeles <https://www.wtsinternational.org/events/reception-metrolink-ceo-darren-kettle>

***April 22, 2022, ASCE California Infrastructure Symposium**, San Francisco War Memorial. ADVANTEC COO, Carlos Ortiz, P.E., PTOE will be speaking on a Panel addressing the important role technology plays in delivering and operating transportation solutions in California.

***May 16-18, 2022-ITS CA Annual Conference and Exhibition**, Hyatt Regency, San Francisco Airport. ADVANTEC Exhibiting and Sponsoring.

***May 29-June 1, 2022- Canada ITE and QUAD 2022 Conference**, Vancouver, Canada. Carlos Ortiz, P.E., PTOE, COO of ADVANTEC will be Speaking

***June 26-29, 2022-ITE Western District Annual Meeting**, Palm Springs, CA. ADVANTEC Speakers include: Leo Lee, Carlos Ortiz, John Dorado and Jose Guedes. ADVANTEC is a Gold Sponsor, Exhibitor, Tours Coordinator for CVLink and CVSync and Local Arrangement Committee (Lawrence Tai and Carlos Ortiz). ADVANTEC team is involved in planning this conference (Carlos, John, Bryan, Lawrence).

***July 31-August 3, 2022-ITE International Annual Meeting and Exhibition**, New Orleans, LA

***August 19, 2022, 2022 Mobility 21 Southern California Transportation Summit, Future Forward**, Disneyland Hotel, Anaheim, CA-In Person

***August 28-31, 2022, APWA PWX**, Charlotte, NC

***November 13-15, 2022 Focus on The Future Conference**, Uniting Transportation, Building a Path to our Future, Newport Beach Marriot, In-Person

In our upcoming issue--New Projects and Project of the Quarter as well as an update on ADVANTEC's broadband work.

Visit our
website

Reach out to us:
Contact Leo Lee, CEO at:
marketing@advantec-usa.com



innovative & cost effective solutions

ADVANTEC's management philosophy is characterized by our motto: "BECAUSE WE CARE!"

Careers &
Opportunities

Phone:
(949) 861-4999
Fax:
(949) 502-5522

ADVANTEC
Website